

AREA SUMMARY
0_GROUND - FLOOR

0.1 BASEMENT	23.6 m²
0.2 BASEMENT	18.4 m²
0.3 BASEMENT	18.4 m²
0.4 BASEMENT	23.6 m²
0.5 STORAGE	4.3 m²
0.6 CORRIDOR	117.4 m²
0.7 STAIRS	11.5 m²
0.8 STORAGE	11.5 m²
0.9 BASEMENT	6.8 m²
0.10 BASEMENT	23.7 m²
0.11 BASEMENT	18.4 m²
0.12 BASEMENT	18.4 m²
0.13 BASEMENT	23.7 m²
0.14 BASEMENT	30.5 m²
ALL	352.2 m²

b brick - 25 cm

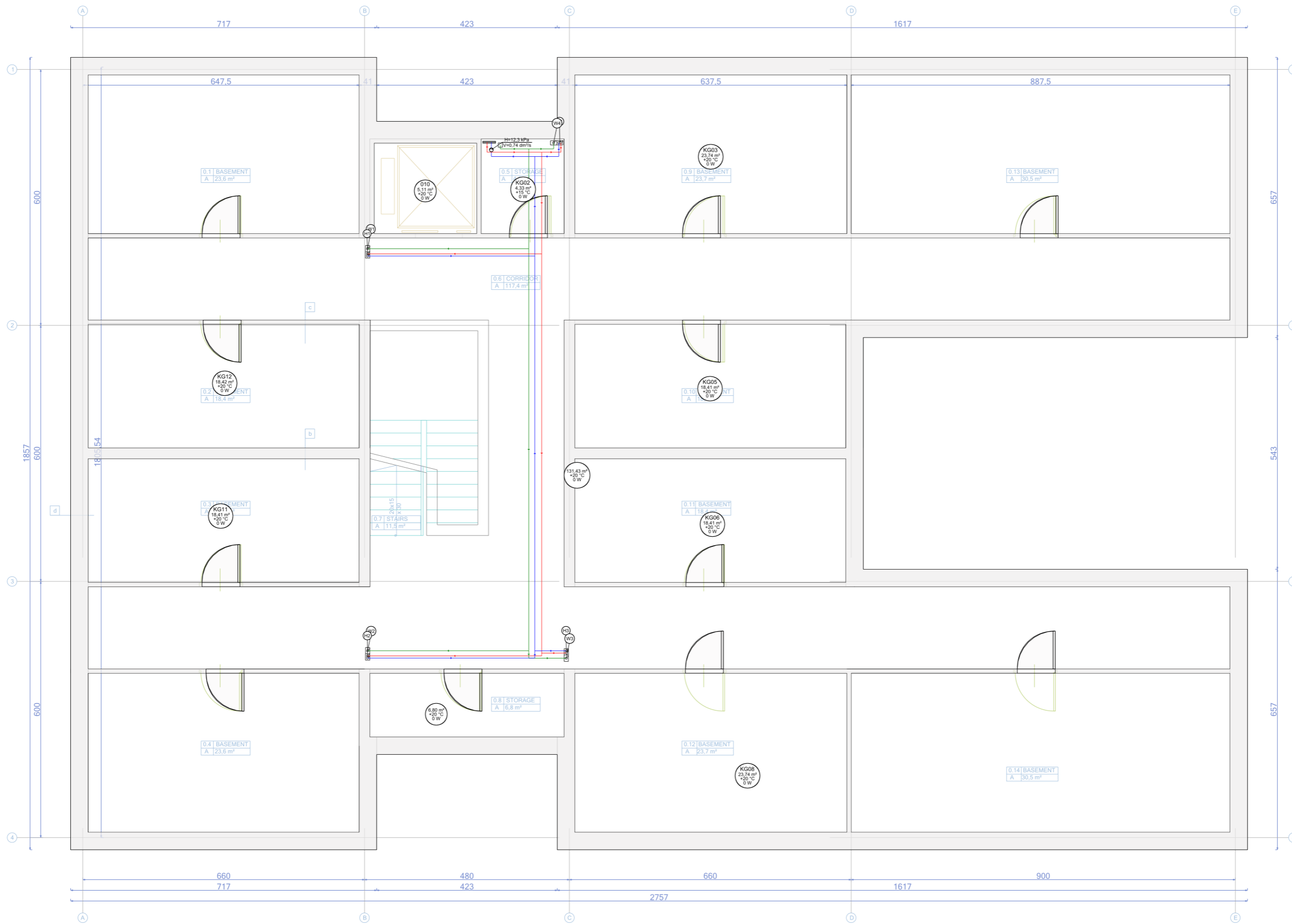
c 2x plasterboard - 2.5cm
steel construction - 5cm
2x plasterboard - 2.5cm

d rock wool - 10cm
thermo-weldable roofing paper
concrete wall - 31cm

FLAT ROOF
gravel - 15cm
roofing felt
mineral wool - 15cm
light concrete - 5cm
vapour barrier
reinforced concrete - 15cm

SLAB
parquet - 2cm
light concrete - 5cm
styrodarm - 5cm
reinforced concrete - 15cm
cement - lime plaster - 2cm
gypsum

SLAB ON THE GROUND
light concrete - 5cm
roofing felt
lean concrete - 15cm
mineral wool - 10cm
sand - 15cm



Designer InstalSoft s.c.	
Project subject InstalSoft s.c.	Phase
Address	Date
Investor InstalSoft s.c.	Scale
Designed by	Signature
Drawn by	Signature
Verified by	Signature
	Drawing no.